

StuderControl

AUTOMATIC CONTROL MEASUREMENTS DIRECTLY ON THE MACHINE

With TouchPositioning and TouchControl STUDER offers three tools for increasing productivity. Workpieces are controlled directly on the machine, the results are recorded and corrections are transferred to the control system.

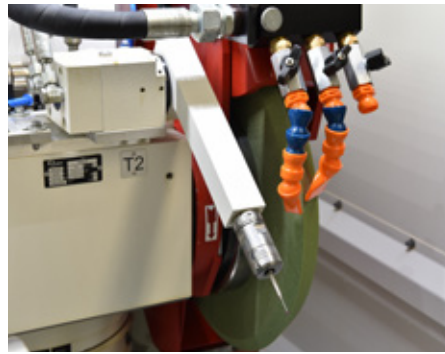
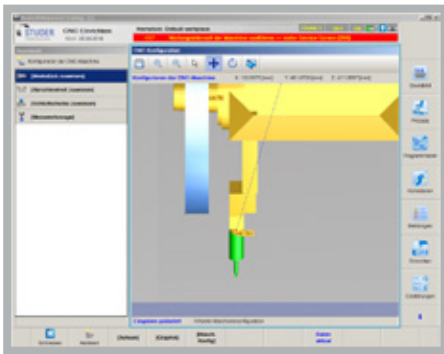
The Studer logo consists of a stylized white 'S' symbol followed by the word 'STUDER' in a bold, white, sans-serif font.

TOUCHPOSITIONING

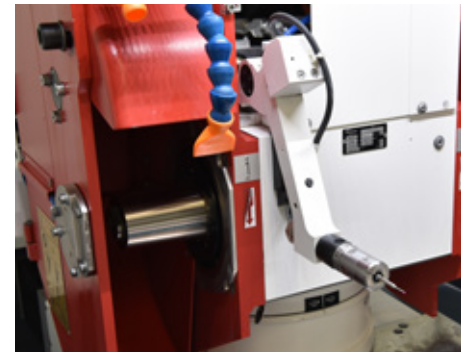
Prerequisite: Machine with a touch probe.

- **Length positioning** for the correction of deviations in the Z-direction (e.g. due to different centerdepths).
- **Circumferential positioning** for circumferential positioning of the workpiece or determination of a contour.
For machines with a touch probe parallel to the machining plane.
- **Length control measurement** For machines with StuderSIM operating system.

External grinding machines Touch probe perpendicular to the workpiece axis and at an angle or parallel to the machining plane.

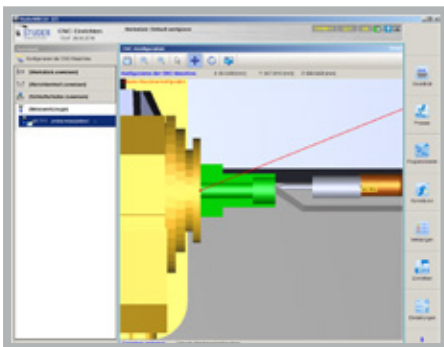


At an angle to the machining plane



Parallel to the machining plane

Internal grinding machines Touch probe parallel to the workpiece axis and parallel to the machining plane.



TOUCHCONTROL

Prerequisite: TouchPositioning and touch probe parallel to the machining plane.

- **Flexible diameter and length control measurement**
For machines with StuderSIM operating system the length control measurement is already standard in the TouchPositioning.
- **Calculation of dimensional deviations**
Seat and tool specific on machines with StuderWIN operating system. Only tool specific on machines with StuderSIM operating system.
- **Logging of post-process control data**
(absolute control values). For machines with StuderWIN operating system.
- **Programmable cycle for automatic calibration of the touch probe to reference diameter or length**
For machines with StuderWIN operating system.



Fritz Studer AG
3607 Thun Switzerland
Phone +41 33 439 11 11
info@studer.com
studer.com



ISO 9001
VDA6.4
certified

